

# How to configure Program Neighborhood Agent with Secure Gateway

by Stefan Müri



## Notice

The information in this publication is subject to change without notice.

THIS PUBLICATION IS PROVIDED "AS IS" WITHOUT WARRANTIES OF ANY KIND, EXPRESS OR IMPLIED, INCLUDING ANY WARRANTIES OF MERCHANTABILITY, FITNESS FOR A PARTICULAR PURPOSE OR NON-INFRINGEMENT.

THOMAS KOETZING, SHALL NOT BE LIABLE FOR TECHNICAL OR EDITORIAL ERRORS OR OMISSIONS CONTAINED HEREIN, NOR FOR DIRECT, INCIDENTAL, CONSEQUENTIAL OR ANY OTHER DAMAGES RESULTING FROM THE FURNISHING, PERFORMANCE, OR USE OF THIS PUBLICATION.

Product names mentioned herein may be trademarks and / or registered trademarks of their respective companies.

## DISCLAIMER

While every effort has been made to ensure that the Web Interface modification code functions as described, it is distributed "as is", with no warranties of any kind. Use at your own risk.

BACK UP YOUR WEB INTERFACE FILES BEFORE MAKING ANY MODIFICATIONS! A slip-up could render your Web Interface site inoperable. Do NOT perform "in-flight" modifications on production servers.

### Version History

Version	Date	Author	Description
0.1	July 2006	Stefan Müri	Initial version

## Table of Contents

Introduction .....	4
Prerequisites.....	4
How to configure the PNA site .....	5
Changing configuration files.....	6

## Introduction

When Citrix released the Program Neighborhood Agent (PNA) it was not designed to use for external access via NAT, PAT, Secure Gateway etc. Since all Citrix ICA Clients are based on the same engine the PNA is truly capable to access Publish Applications from a not trusted network. Citrix realised that the Agent was actually used by customer for external access even Citrix didn't designed it for that purpose. Because of security concerns Citrix removed the external options within the PNA configuration site with Web Interface 4.x.

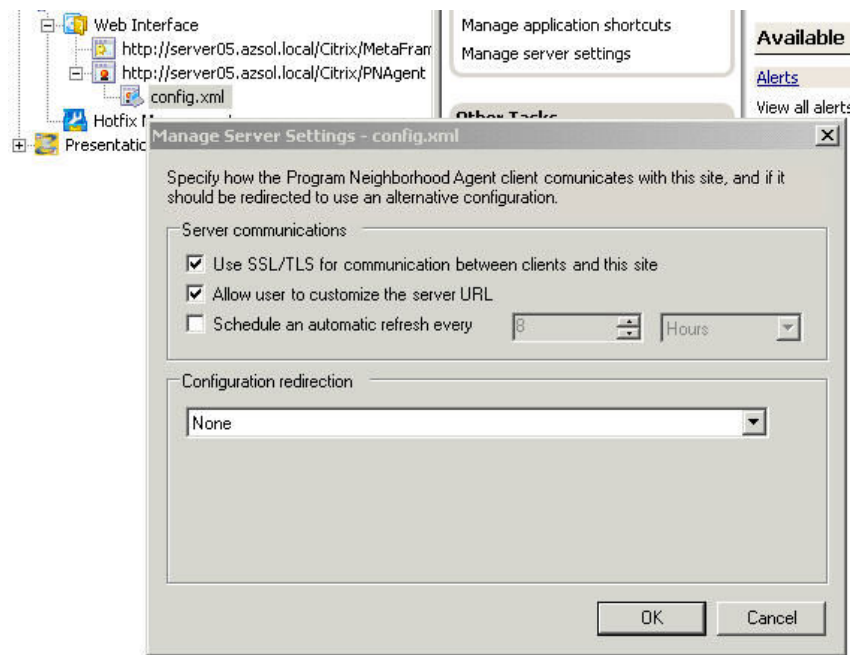
The following short description explains how to change the PNA site, so it can be used again for external access. The configuration was tested with Secure Gateway and Web Interface on the same Server as well when they are separated.

## Prerequisites

The following description assumes that Citrix Web Interface and Secure Gateway are configured and already working for external access. Start only with the Program Neighborhood Agent site configuration when you can access publish application through Web Interface that is configured for the use with Citrix Secure Gateway.

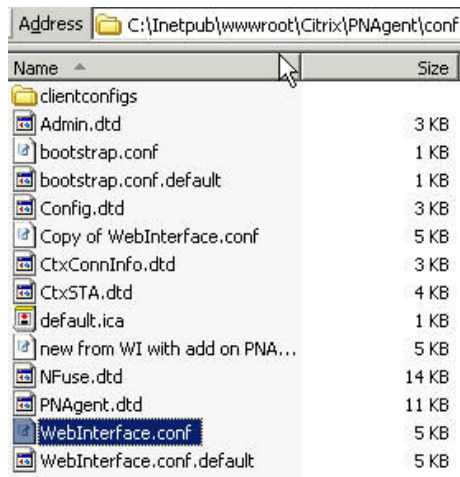
## How to configure the PNA site

First create a “normal” Program Neighborhood Agent site through the Access Suite Console (ASC). After the site was created go to “Manage Server Settings” and enable the SSL/TLS option as shown in the following picture.



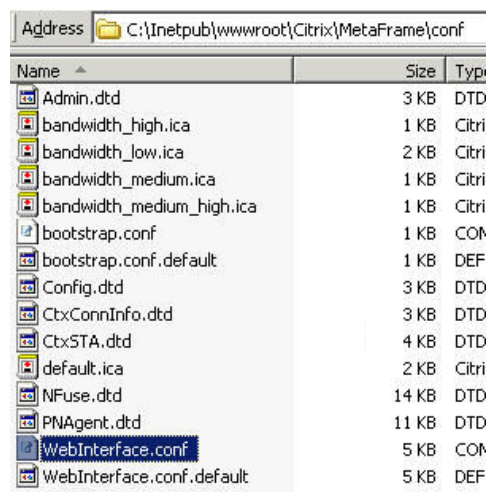
## Changing configuration files

First make a backup of the PNA site configuration file WebInterface.conf You find the configuration file with a default installation in the Internet Information Server (IIS) root in the Citrix\PNAgent\conf folder as show in the snapshot.



Name	Size
clientconfigs	
Admin.dtd	3 KB
bootstrap.conf	1 KB
bootstrap.conf.default	1 KB
Config.dtd	3 KB
Copy of WebInterface.conf	5 KB
CtxConnInfo.dtd	3 KB
CtxSTA.dtd	4 KB
default.ica	1 KB
new from WI with add on PNA...	5 KB
NFuse.dtd	14 KB
PNAgent.dtd	11 KB
WebInterface.conf	5 KB
WebInterface.conf.default	5 KB

Next copy the existing Web Interface configuration file (that already works with Secure Gateway) from the WI configuration folder into the PNA configuration folder and overwrite the WebInterface.conf file.



Name	Size	Type
Admin.dtd	3 KB	DTD
bandwidth_high.ica	1 KB	Citri
bandwidth_low.ica	2 KB	Citri
bandwidth_medium.ica	1 KB	Citri
bandwidth_medium_high.ica	1 KB	Citri
bootstrap.conf	1 KB	COM
bootstrap.conf.default	1 KB	DEF
Config.dtd	3 KB	DTD
CtxConnInfo.dtd	3 KB	DTD
CtxSTA.dtd	4 KB	DTD
default.ica	2 KB	Citri
NFuse.dtd	14 KB	DTD
PNAgent.dtd	11 KB	DTD
WebInterface.conf	5 KB	COM
WebInterface.conf.default	5 KB	DEF

Open the copied WebInterface.conf file in the PNA configuration folder and add the following two lines at the end

```
DisablePNAgentLocalConfigCheck=Off  
PNAgentMaxRequestBytes=8360
```

**That's it, you're done!**

Try the external access through Secure Gateway by setting the Program Neighborhood Agent to the URL [https://FQDN\\_Secure\\_Gateway](https://FQDN_Secure_Gateway)